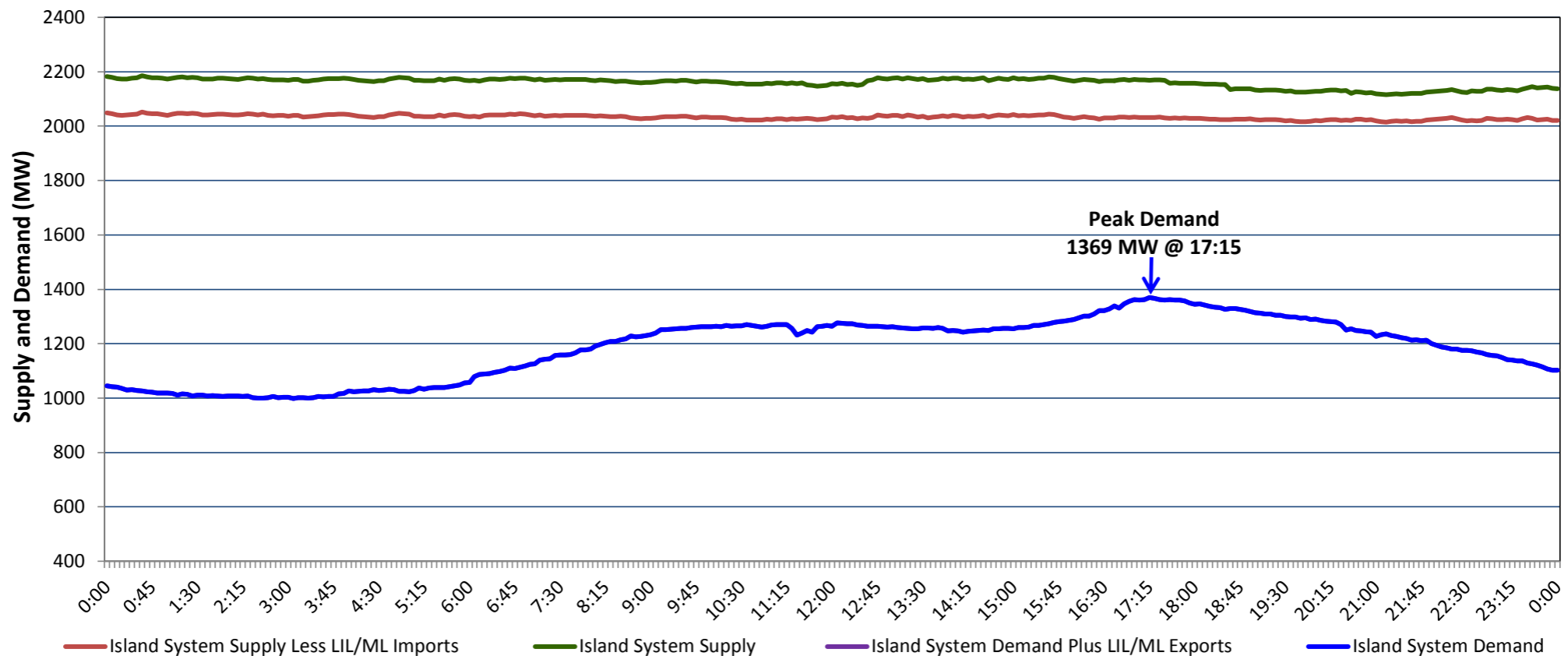


## Newfoundland Labrador Hydro (NLH) Supply and Demand Status Report Filed Monday, January 14, 2019

### Section 1 Island Interconnected System Supply, Demand & Exports Actual 24 Hour System Performance For Saturday, January 12, 2019



#### Supply Notes For January 12, 2019

1,2

**A** As of 0620 hours, January 10, 2019, Holyrood Unit 1 available at 162 MW (170 MW).

### Section 2 Island Interconnected Supply and Demand

Sun, Jan 13, 2019	Island System Outlook <sup>3</sup>	Seven-Day Forecast	Temperature (°C)		Island System Daily Peak Demand (MW)	
			Morning	Evening	Forecast	Adjusted <sup>7</sup>
Available Island System Supply: <sup>5</sup>	2,134 MW	Sunday, January 13, 2019	-6	-4	1,435	1,332
NLH Island Generation: <sup>4</sup>	1,675 MW	Monday, January 14, 2019	-6	-5	1,520	1,416
NLH Island Power Purchases: <sup>6</sup>	135 MW	Tuesday, January 15, 2019	-4	-1	1,530	1,426
Other Island Generation:	210 MW	Wednesday, January 16, 2019	-4	-6	1,530	1,426
ML/LIL Imports:	114 MW	Thursday, January 17, 2019	-3	-3	1,480	1,377
Current St. John's Temperature & Windchill:	-6 °C	Friday, January 18, 2019	-8	-8	1,605	1,500
7-Day Island Peak Demand Forecast:	1,605 MW	Saturday, January 19, 2019	-7	-2	1,460	1,357

#### Supply Notes For January 13, 2019

3

**B** At 0416 hours, January 13, 2019, Holyrood Unit 3 unavailable (150 MW).

**C** At 0527 hours, January 13, 2019, Holyrood Unit 3 available (150 MW).

**D** At 0800 hours, January 13, 2019, Paradise River Unit unavailable (8 MW).

- Notes:
1. Generation outages for running and corrective maintenance are included. These are not unusual for power system operations. They generally do not impact customer supply. The power system operators schedule outages to system equipment whenever possible to coincide with periods when customer demands are low and sufficient supply reserves are available. However, from time to time equipment outages are necessary and reserves may be impacted.
  2. Due to the Island system having no synchronous connections to the larger North American grid, when there is a sudden loss of large generating units there may be a requirement for some customer's load to be interrupted for short periods to bring generation output equal to customer demand. This automatic action of power system protection, referred to as under frequency load shedding (UFLS), is necessary to ensure the integrity and reliability of system equipment. Under frequency events have typically occurred 5 to 8 times per year on the Island Interconnected System and the resultant customer load interruptions are generally less than 30 minutes. With the activation of the Maritime Link frequency controller during the winter of 2018, UFLS events have occurred less frequently.
  3. As of 0800 Hours.
  4. Gross output including station service at Holyrood (24.5 MW) and improved NLH hydraulic output due to water levels (35 MW).
  5. Gross output from all Island sources (including Note 4).
  6. NLH Island Power Purchases include: CBPP Co-Gen, Nalcor Exploits, Rattle Brook, Star Lake, Wind Generation and capacity assistance (when applicable).
  7. Adjusted for curtailable load, market activities and the impact of voltage reduction when applicable.

### Section 3 Island Peak Demand Information Previous Day Actual Peak and Current Day Forecast Peak

Sat, Jan 12, 2019	Actual Island Peak Demand <sup>8</sup>	17:15	1,369 MW
Sun, Jan 13, 2019	Forecast Island Peak Demand		1,435 MW

Notes: 8. Island Demand / LIL / ML Exports (where applicable) is supplied by NLH generation and purchases, plus generation owned and operated by Newfoundland Power and Corner Brook Pulp & Paper (Deer Lake Power, DLP).